

SOUTHERN SEGMENT RECOMMENDED ROUTE

(ASSUMES U.S. 189 REALIGNMENT)



■ South 2C

Potential pedestrian/bike trail

2C

Realignment of U.S. 189
and Southfield Rd



Industrial Pkwy

300 W

Main St

1200 S

Daniels Rd

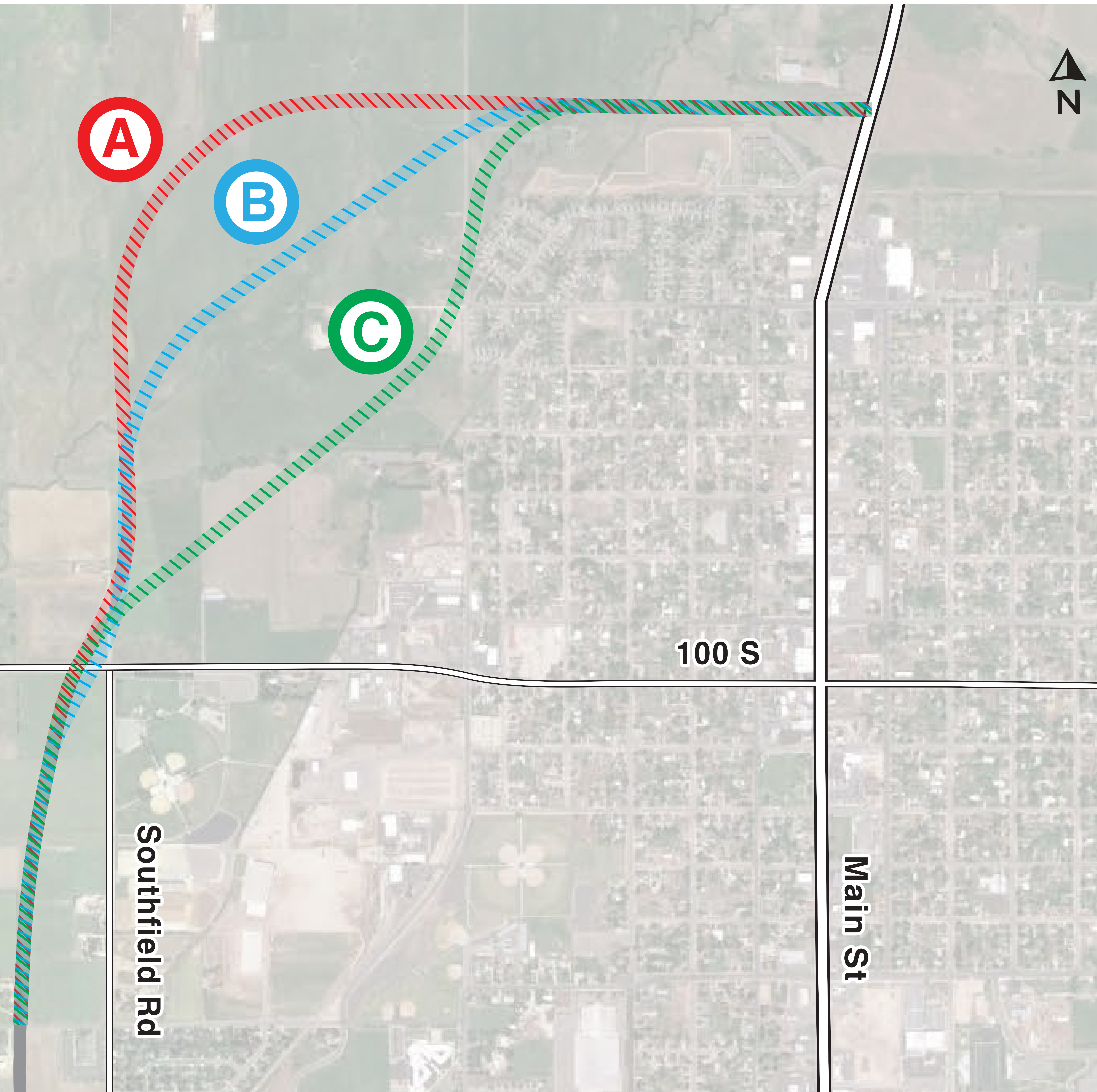
U.S. 40

U.S. 189

NORTH SEGMENT ROUTES CONSIDERED

Three options were reviewed for the northern segment. Due to extensive wetlands, further evaluation is needed in an environmental study to determine a recommended route for this area.

- North A
- North B
- North C



WESTERN SEGMENT RECOMMENDED ROUTE

(ASSUMES U.S. 189 REALIGNMENT)

■ West C

