

SR-9

RENEWED

Rockville to Zion National Park

Springdale Town Council
June 7, 2017

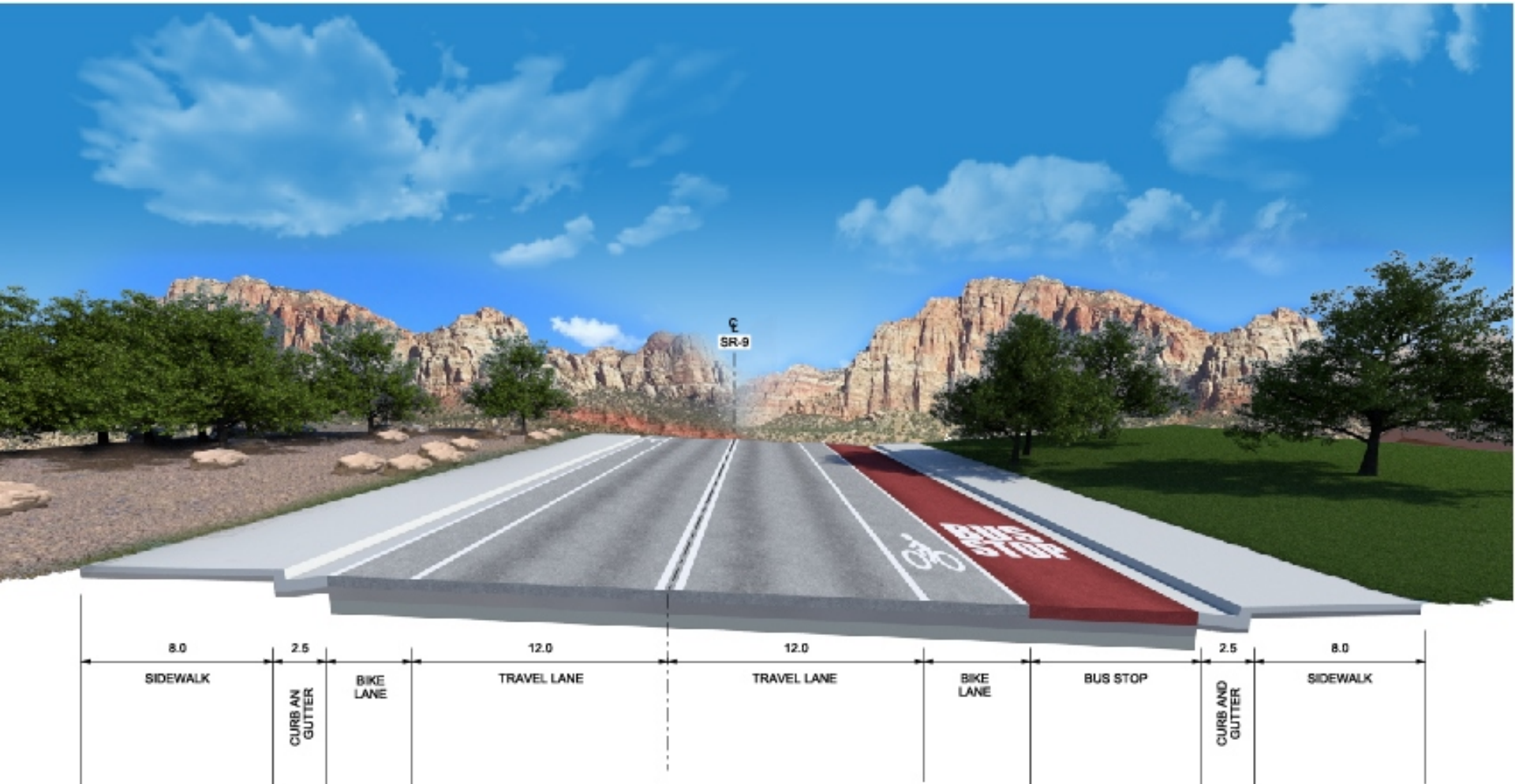


PROJECT OVERVIEW

Collaborative to meet needs of all partners:

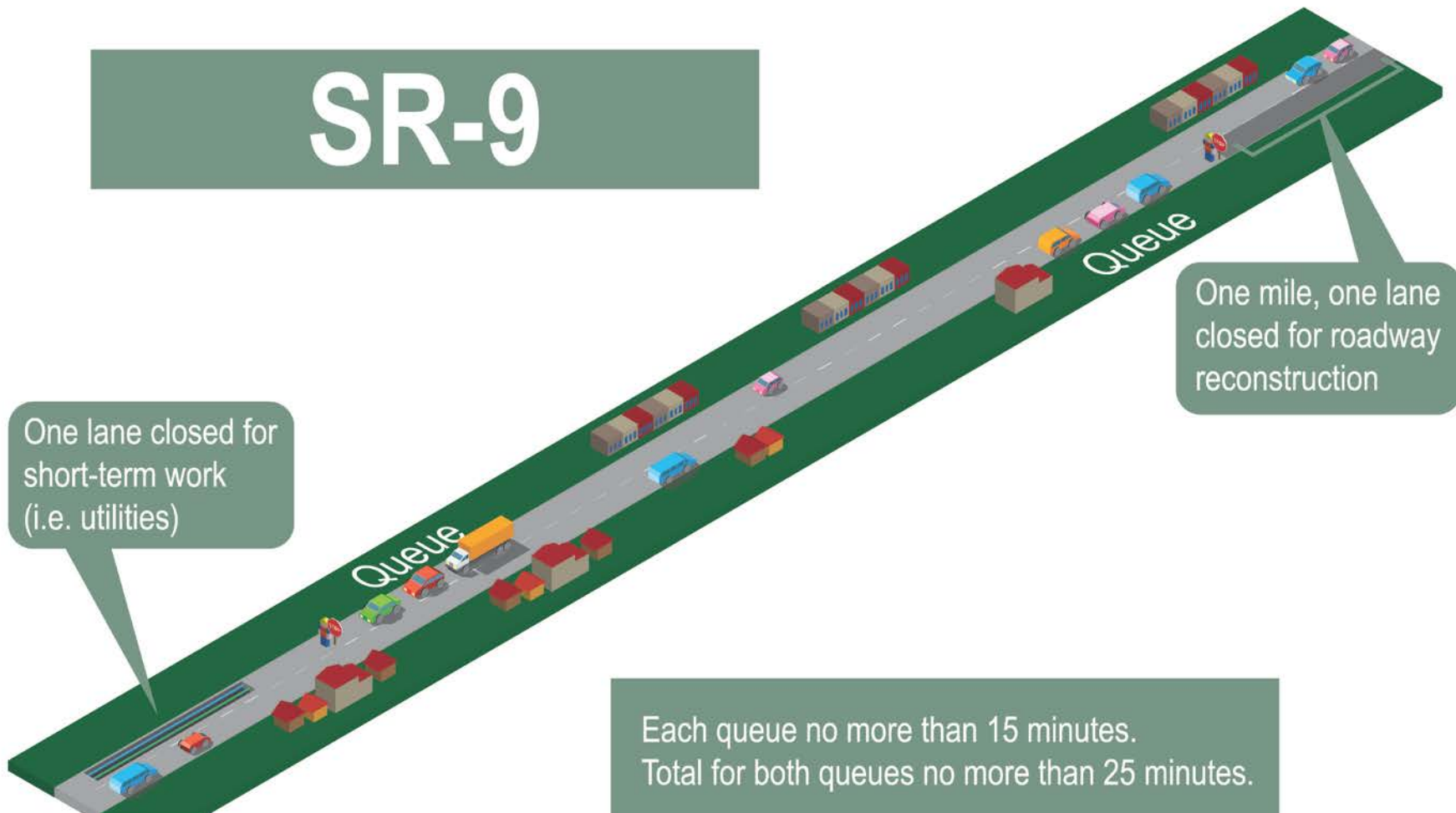
- Improving roadway
- Adding bicycle lanes
- Widening sidewalk
- Installing underground power
- Upgrading lighting
- Installing new storm drain

PROJECT DESIGN



TRAFFIC IMPACTS

SR-9



ACCESS IMPACTS

BUSINESS

Closed up to 30 minutes per day during business hours

Closed up to one hour per day outside of business hours

RESIDENTIAL

Closed up to one hour per day any time of the day

STREETS

Closed up to one hour per day any time of the day

Will receive two weeks' notice before closures if impacted

SCHEDULE

Complete Design (June 2017)

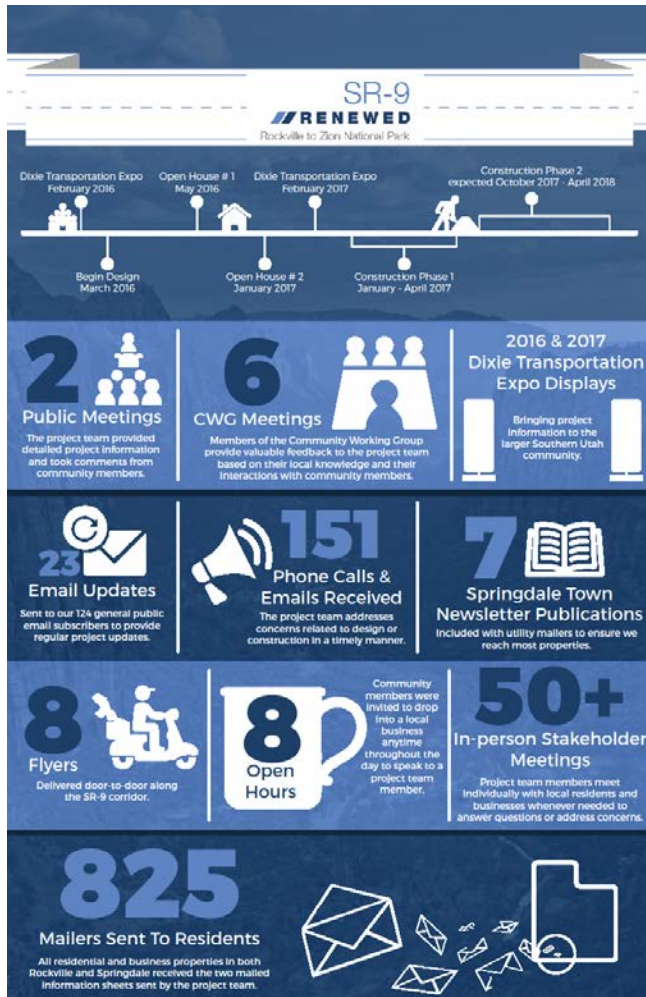
ROW negotiations (through June 2017)

Advertise for contractor (July 2017)

Construction (October 2017 – April 2018)*

* Project schedule depends on numerous factors including utility design and right-of-way completion. If not completed in one season, UDOT will work to reduce impacts during busier months.

COMMUNICATION METHODS



Contact list has 150 residents/
businesses and 1100+ tour companies

Increased communication during
construction including:

- Improved website format
- Walking/shuttle stop maps
- On the ground point of contact
- National Parks coordination
- Community Working Group with contractor incentive

NIGHT WORK

- Constructed during time with lowest visitation
- Need to work 24 hours a day to complete in the time allowed
- Impacts include noise, light and vibration
- The project is seeking a permit for this night work

CONTACT US

SR-9

RENEWED

Rockville to Zion National Park

(888) 556-0232

sr9@utah.gov

www.udot.utah.gov/go/sr9