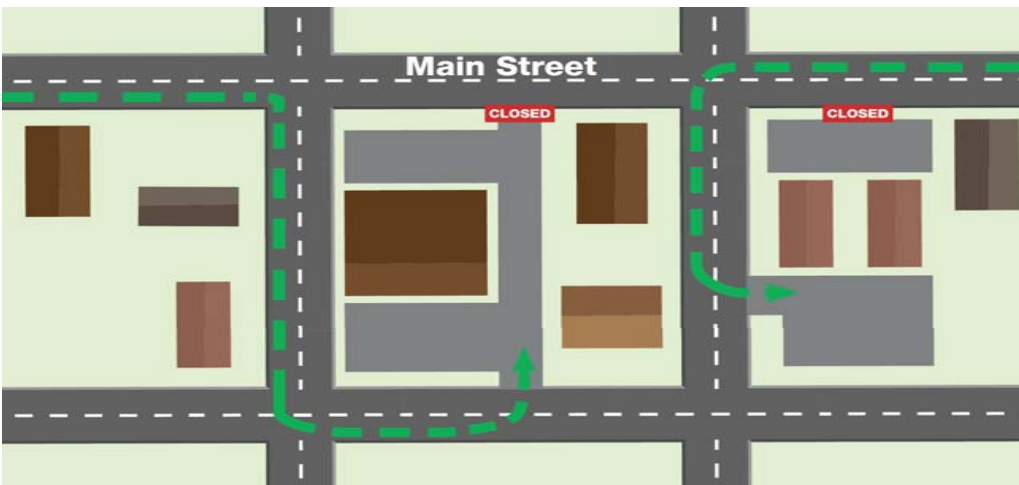


Business Access



The contractor will maintain one access to each property during construction. This maintained access may not be the access from Main Street.

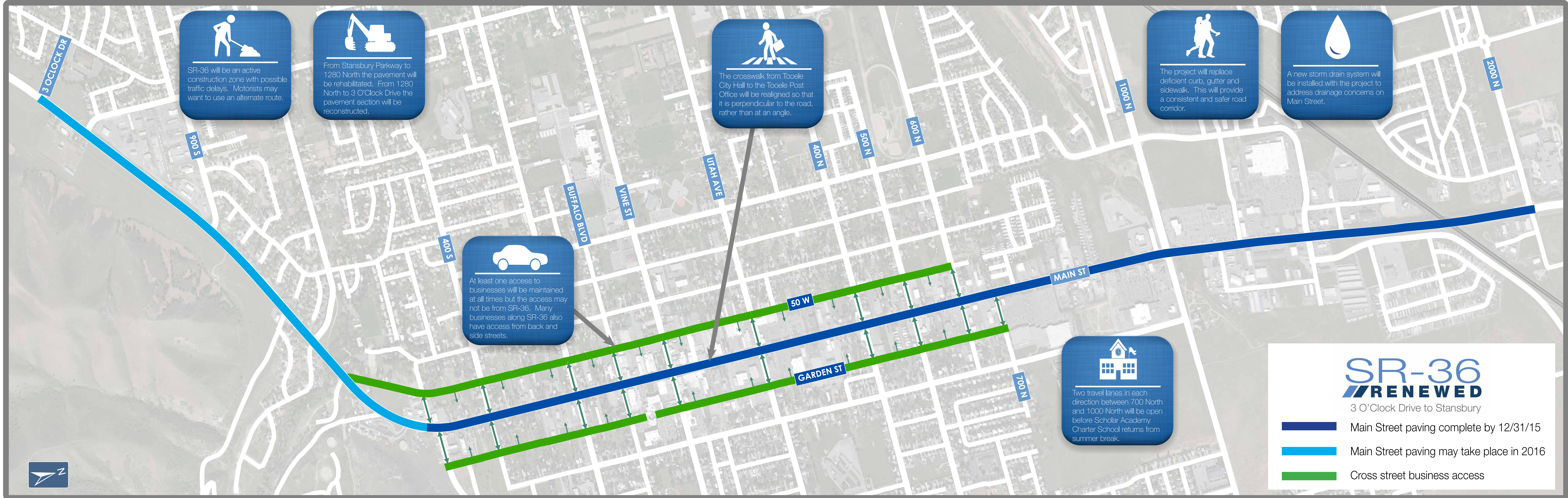
All access changes will be coordinated with property owners.

Cross Street Closures



The contractor will be allowed to close cross street access from Main Street during construction. However, two adjacent cross streets may not be closed at the same time.

Advanced notice to the community will be given prior to any closures.



STAY INFORMED

WANT TO STAY UP TO DATE WITH CONSTRUCTION ACTIVITIES AND IMPACTS? FOLLOW THE PROJECT TEAM.



WWW.UDOT.UTAH.GOV/GO/SR36



SR36@UTAH.GOV



[@UDOTREGIONTWO](https://twitter.com/UDOTREGIONTWO)



WWW.COMMUTERLINK.UTAH.GOV



801-859-3770